

# Steel Stair Treads, Nosings & Clips

**Lockinex**  
*great service, great quality*

## INTRODUCTION

Lockinex Stair Treads, Nosings and clips are used as part of access structures and stairways. Pre manufactured for fast despatch, complimented with part manufactured items for the engineer to cut and weld to their own designs where required.

## APPLICATION

Used in the construction of Industrial Access walk ways and Staircases.

## DESIGN

Various designs and sections to accommodate current Building Regulations & BS EN Codes.

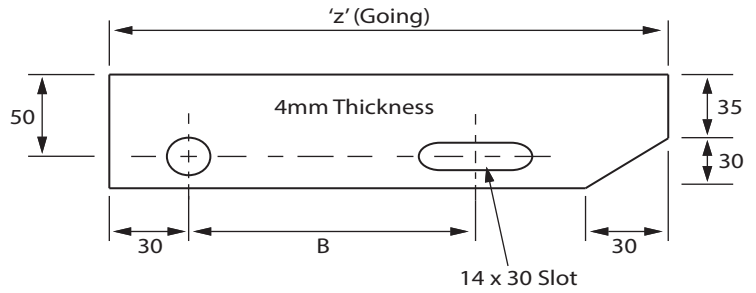
## COMPOSITION, MANUFACTURE

Stair Treads, Nosings and clips are all manufactured from mild steel.

Except for the items part manufactured for the engineer to cut & weld, all other items are galvanised to BS EN 1461:2009

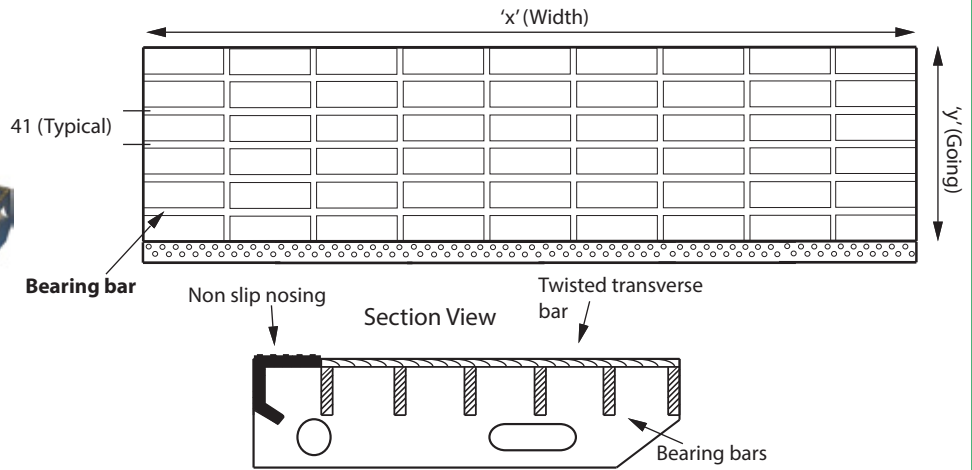


**Stair tread end plate**



Product Code	'z' (Going)	B	Weight
Tread-01	250mm	125mm	0.10kg
Tread-02	275mm	125mm	0.15kg
Tread-03	290mm	125mm	0.16kg

**Open steel stair-treads**



Product Code = Tread-	Size (mm) 'x' 'y'	Bearing Bar (mm)	Weight
	800 x 242	25 x 5	7kg
	800 x 283	25 x 5	9kg
	1000 x 242	25 x 5	8kg
	1000 x 283	25 x 5	11kg

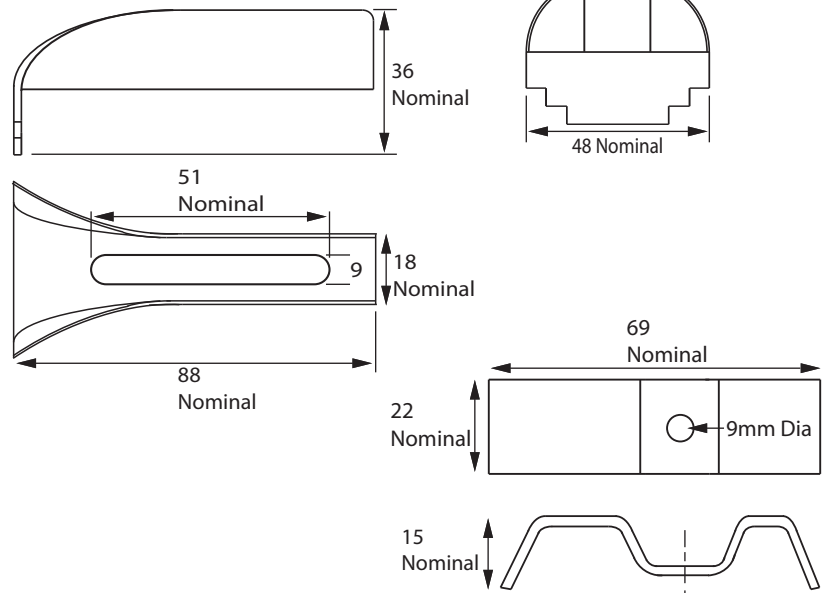
**Open steel stair treads-Loose End Plate**



This product has the same features shown in the drawing above. However this product is supplied with one of the end plates loose and comes with a self-colour finish ready for cutting to length & welding.

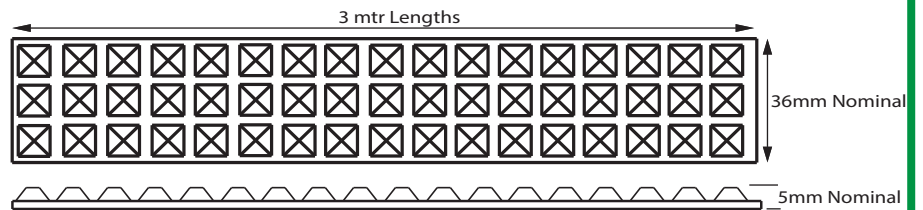
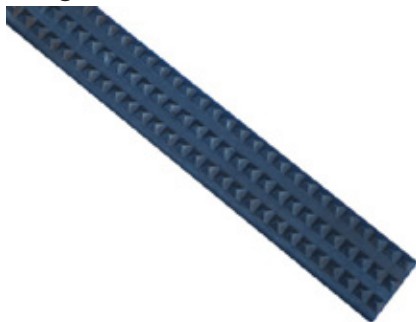
Product Code = Tread-	Size (mm) 'x' 'y'	Bearing Bar (mm)	Weight
	1000 x 283-Loose plate	25 x 5	10kg
	1200 x 333-Loose plate	30 x 5	15kg

**Lockinex 01**



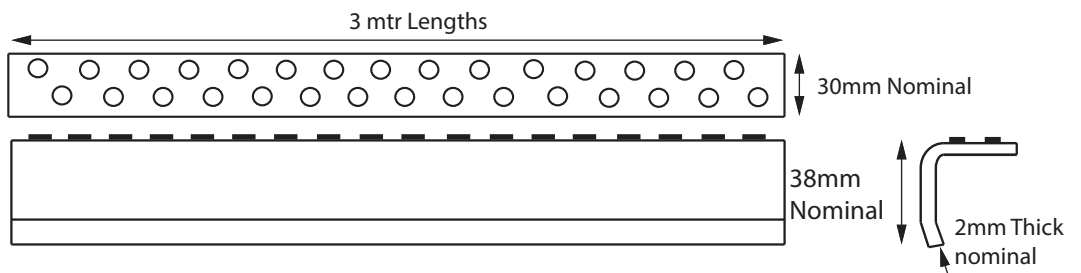
Lockinex multi-fit flooring clip. Galvanised finish complete with nylock nuts. Fits 30mm to 41mm load bar centres and fits up to 50mm deep load bars as standard. Once the clip is assembled, it can be inserted through the grating and with a standard spanner or screw driver tightened. The clever design of the clip holds the nut firmly in place while the operator can safely tighten the bolt from above. The nylock nut keeps the clip firmly in place and prevents any unwanted loosening through vibration etc.

**Forginex-12**



Pyramid anti-slip nosing. Self colour ready for welding.

**Forginex 15**



Perforated non-slip nosing. Self colour ready for welding.